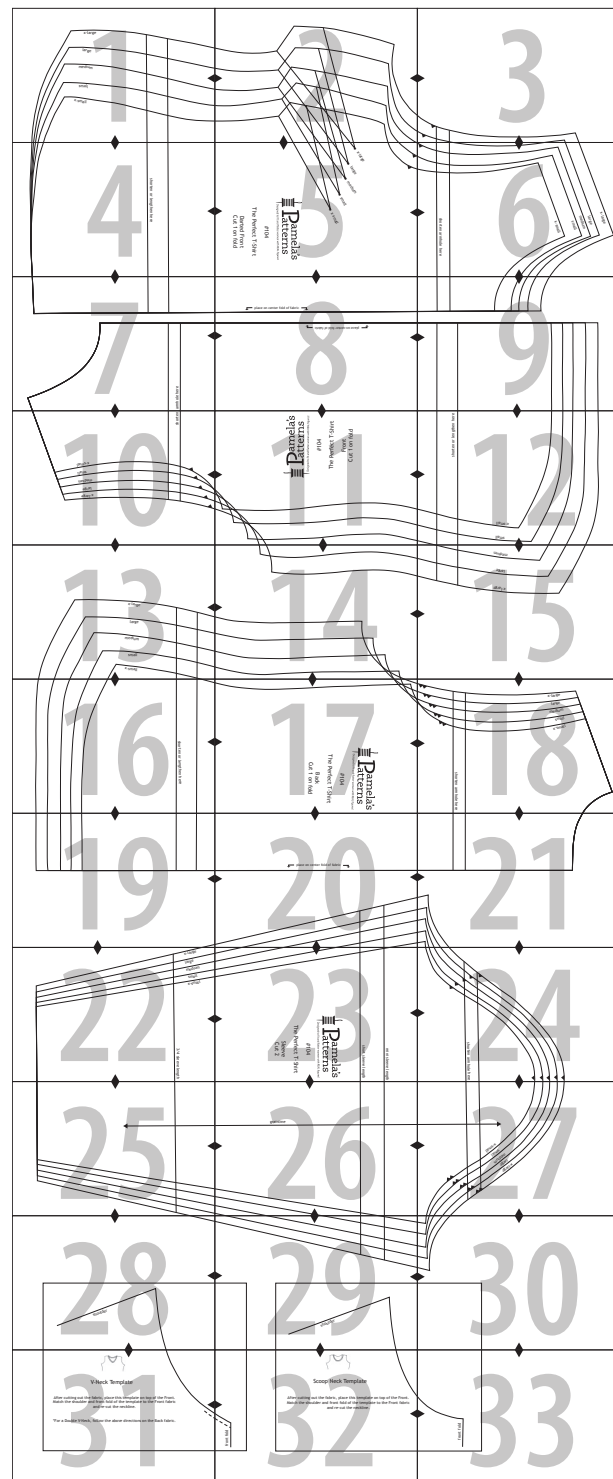
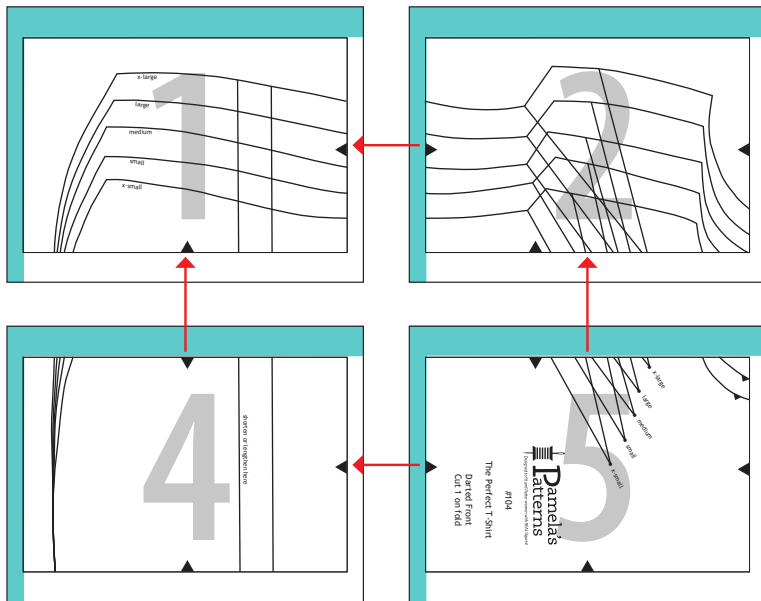


Tips for using Downloadable Patterns

- Print on letter or A4 size paper. **BE SURE** to print the pattern actual size. Otherwise, it will not work. Some PDF applications have page scaling set by default to "fit to printable area". If so, change page scaling to "None".
- Before printing your pattern, print the page containing the Test Square. Measure the square with a ruler. If its sides do not equal 4", check your printer settings and try again.
- If your Test Square is still not printing at a 4" square, you may need to download the latest version of (free) Acrobat Reader.
- To save printer ink, choose "draft" or "fast" quality.

The pattern will print on 33 pages as shown here:

- Trim off the left and top margins (colored blue here). Then overlap the pages as shown by the red arrows, bringing the black triangles together to form diamonds. Tape the pages together to form the pattern.



 Pamela's
Patterns
Designed to fit and flatter women with REAL figures!

www.pamelaspatterns.com

