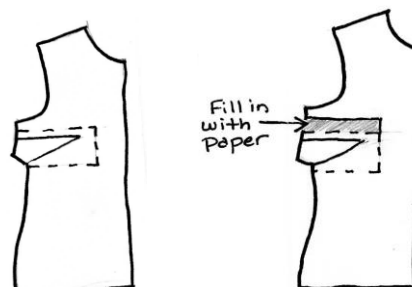




How To Lower A Dart

On the pattern, draw a “three sided box” around the existing dart. This should be just slightly larger than the dart. Cut out the box.

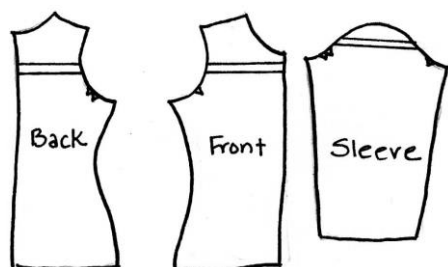
Slide the “dart box” down the desired amount. Fill in the gap above the dart with pattern paper and tape in place. True up the side seam.



How To Shorten (petite) an Armhole

Draw two lines above the notches in the armhole of the front, back and sleeve. The distance between the two lines is the amount the armhole needs to be shortened. Cut along the bottom line and move to the top line.

Be sure to keep the grainline or center front/back even. Tape in place.



True the cutting lines with the “Curvey” ruler

Narrowing the Shoulder Width

Try on the garment prior to putting in the sleeves. Make sure the seam line of the garment is right on the end of your shoulder bone. If it hangs over the edge of your shoulder, trim away the excess fabric, tapering to nothing at the armhole notches. Use Pamela’s Patterns “Curvey” ruler to true the curve. Make the changes to the Front and Back pattern piece. As long as this adjustment isn’t more than 5/8”, the sleeve ease should be fine.

